



DATA LINKS™ QUERY

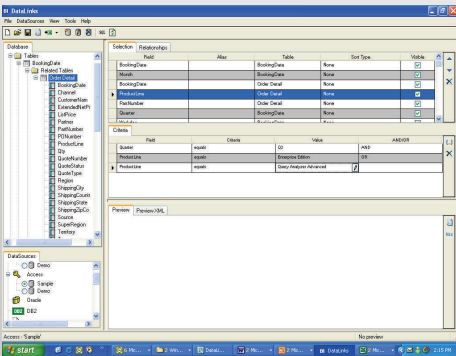
DataLinks™ Query is a lightweight desktop solution that enables you to create flexible, safe, and secure queries and reports. It can be used for any data source including, but not limited to, Microsoft Access, Oracle, DB2 and Web Services all from one intuitive user interface. It is so easy to use that there are no training, deployment or installation charges; Simply download and go.

Gain autonomy and freedom to get connected to any data source from your desktop without knowing complex report writing languages such as SQL. Simply choose a data source, drag desired fields to the selection pane and export to Excel. It is as easy as three simple steps, that are guaranteed to save hours a day from current reporting processes.

As IT departments are becoming more burdened, they have less time to spend on the constant requests for ad-hoc reports. With DataLinks™ Query, business users will finally own a tool that gives them the flexibility to allow them to make their own changes in a completely controlled and safe environment. DataLinks™ Query utilizes database level security, only allowing the user access to information that IT has already deemed acceptable. It does not allow for write back capabilities, ensuring that database structures and integrity are always secure and intact.

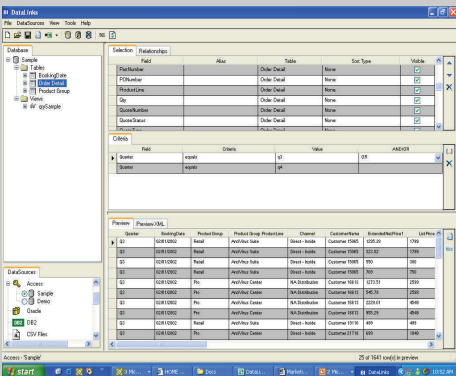
DataLinks™ Query is an essential solution for busy professionals that need a fast and easy way to access information. It is a flexible and easy to use application that produces quick results, adding instant value. If it is important for you to save time and money then DataLinks™ Query is for you.

For more information please visit our website at www.BusinessIntelligenceLLC.com, or contact us directly at 610 971-4067 or via e-mail at Sales@BusinessIntelligenceLLC.com.



It is Easy:

- Select a Data Source
- Choose desired Tables or Views
- Drag and Drop Fields



- Select Criteria
- Preview data.
- Export to Excel.

Other products available from Business Intelligence LLC:

- **DataLinks™ Dashboard Builder**
- **DataLinks™ Pro**
- **DataLinks™ ReadyReports**
- **Services**